



CONTLEE INDIA PRIVATE LIMITED

CIN:U74999HR2021PTC094127

Reg. Office: B-41, FRIENDS COLONY FARIDABAD Faridabad HR121002 IN

Email ID: rajnights@gmail.com Mo. +91-8587045100



About Us

Contlee India Pvt. Ltd. is a multi-discipline engineering contracting and construction company having its Head office at Faridabad in the state of Haryana, India.

Contlee India Pvt. Ltd. is a fast-growing company working with Hindustan Petroleum Corporation Limited as a Civil, Mechanical, and Electrical Vendor delivering the best service among many states of India.

Since inception, Contlee has been actively engaged in Petrol Pump Maintenance activities for as registered contractor under Hindustan Petroleum Corporation Limited. Contlee India Pvt. Ltd. is known for its good quality projects/work and Rapid response to the jobs received by the customer.



Our Vision

Our vision is to be a recognized leader in the civil construction industry, delivering exceptional quality and value to our clients. We strive to be at the forefront of innovation and sustainability, utilizing the latest technologies and practices to enhance our efficiency and effectiveness. Our goal is to build strong, long-term relationships with our clients, partners, and employees, based on mutual respect and trust. We aspire to contribute to the growth and development of the communities we serve, while maintaining a commitment to safety, quality, and the environment. We envision a future where we are recognized as a trusted and reliable partner, delivering outstanding results that exceed expectations.



Our Mission

Our mission is to provide high-quality civil construction services that meet the diverse needs of our clients. We strive to deliver innovative solutions that exceed expectations, while maintaining a focus on safety, efficiency, and sustainability. We are committed to building lasting relationships with our clients, partners, and employees based on honesty, integrity, and trust. Our goal is to be a leader in the industry, delivering exceptional value and contributing to the growth and development of the communities we serve.



Objective of Company

Contlee India Private Limited Objectives are –

1. Deliver high-quality construction projects that meet or exceed client expectations.
2. Complete projects on time and within budget, while maintaining a focus on safety and quality.
3. Continuously improve processes and procedures to enhance efficiency and effectiveness.
4. Foster a culture of innovation and collaboration, encouraging employees to share ideas and best practices.
5. Build strong relationships with clients, partners, and suppliers based on trust and respect.
6. Prioritize sustainability and environmental responsibility in all aspects of operations.
7. Provide ongoing training and development opportunities to employees, enabling them to grow and advance within the company.
8. Maintain a strong financial position, ensuring long-term stability and growth.
9. Contribute to the growth and development of the communities where we operate.
10. Embrace emerging technologies and practices to stay ahead of industry trends and remain competitive.



Promoter's of Company



Name: Rajesh Sharma
Designation: Director
DIN: 07005761
Mobile Number: +918587045100
Email ID: rajnights@gmail.com



Name: MANISH VARMA
Designation: Director
DIN: 09129582
Mobile Number: +9899120846
Email ID: manish.verma9061@gmail.com



Our Services

Our Services related to Electrical work , Civil Work and Mechanical work.

Electrical Work

1. Supply & Installation of LT Panels.
2. Testing of Earth pits.
3. Electrical panel up-gradation.
4. Cable Work.
5. Misc. Repair & Maintenance Jobs of all electrical equipment.
6. Load balancing job.

Civil Work

1. Construction of building.
2. Installation of underground tank.
3. Construction of DU foundation or platform.
4. Construction of driveway.
5. Construction of Earthing-pits.
6. Development of steel structure for canopy.

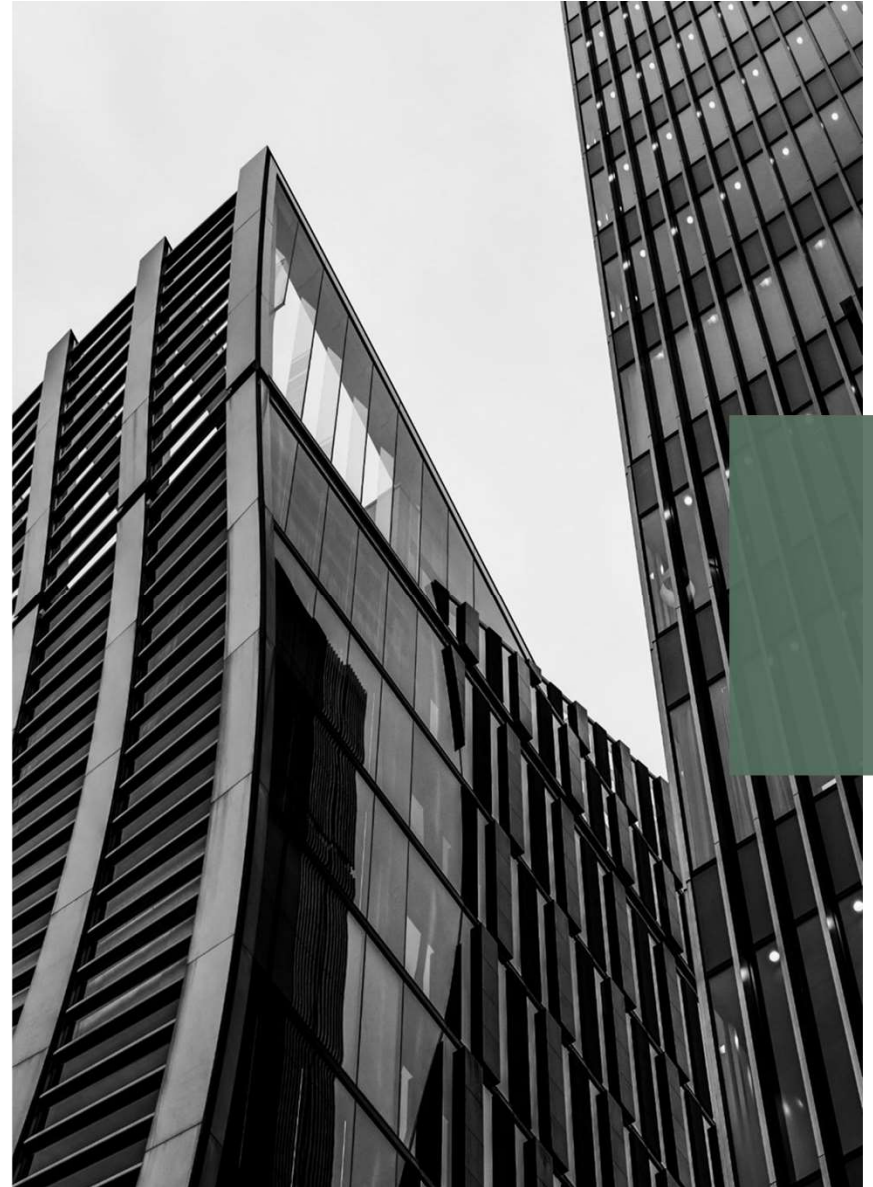
Mechanical Work

1. Installation of DU & STP.
2. Installing fuel Pipe lines.
3. Hydro testing work. (For fuel tank.)
4. Testing of pipeline for leakage.
5. Misc. Repair & Maintenance Jobs.



Uniqueness:

The uniqueness of Contlee India Private Limited lies in its ability to design, plan, and construct complex infrastructure projects that are essential to modern society. Unlike other construction companies, Our Company specialize in the construction of large-scale projects such as Petrol Pump, highways, bridges, tunnels, dams, and other critical infrastructure that are vital to the functioning of society. These projects require a high level of technical expertise, specialized equipment, and skilled labor to complete. Our Company also often work closely with government agencies, municipalities, and other stakeholders to ensure that their projects meet regulatory requirements and community needs. Additionally, Our companies are committed to sustainability and environmental responsibility, striving to minimize the impact of their projects on the environment and surrounding communities. Their unique blend of technical expertise, innovation, and commitment to sustainability makes our company a vital and valuable component of the construction industry.





Problem on which We are working

The problem that Our Company is solving is the need for essential infrastructure development to support modern society. Without the expertise and resources of Our Company, the construction of critical infrastructure projects such as Petrol pump, highways, bridges, tunnels, airports, and other vital structures would not be possible. These projects are essential for the functioning of society and the economy, as they provide the necessary transportation and communication networks that connect people and businesses. Our Company also address the challenge of aging infrastructure by renovating and upgrading existing structures to meet modern safety and environmental standards. In addition, Our company are committed to sustainability and environmental responsibility, addressing the need for infrastructure development that minimizes environmental impact and promotes long-term sustainability. In summary, the problem that Our company are solving is the need for essential infrastructure development and improvement to support the needs of modern society.





Solutions

Contlee India Private Limited aims to solve the problem of essential infrastructure development by leveraging innovative approaches, technologies, and business models to improve efficiency and reduce costs. By using new and emerging technologies such as building information modeling (BIM), 3D printing, and automation, our startup can streamline the construction process and reduce project timelines. Additionally, our startups will leverage data analytics and artificial intelligence to optimize project planning and management, further improving efficiency and reducing costs.

Moreover, our startups focus on sustainability and environmental responsibility by incorporating eco-friendly materials and designs into their projects, reducing waste, and promoting energy efficiency.

To solve the challenge of aging infrastructure, our startups focus on innovative solutions for retrofitting and upgrading existing structures, improving safety and extending the lifespan of these critical assets.

Overall, Our startups solve the problem of essential infrastructure development by leveraging innovation, sustainability, and flexibility to deliver high-quality projects efficiently and cost-effectively.





Revenue Model

Our startups can generate revenue through various models, including project-based revenue, recurring revenue, and value-added services.

1. Project-based revenue is the most common revenue model for our startups. Under this model, We earns revenue by bidding on and winning contracts for construction, installation, or maintenance projects.
2. Recurring revenue is another revenue model that we will utilized to generate revenue. This model involves providing ongoing services to clients, such as maintenance, repair, or inspection services. This model provide a stable source of revenue for our startup, as clients are likely to require ongoing services to maintain and operate their infrastructure.
3. Value-added services are also a potential revenue stream for our startup. These services can include consulting, design, and engineering services, as well as specialized services such as energy efficiency assessments or sustainability consulting. We earn revenue by charging clients for these services, which can be priced based on the value they provide to the client. This model can provide our startup with an opportunity to differentiate themselves from competitors and provide additional value to clients beyond the core construction or maintenance services.



...Revenue Model

4. Another potential revenue model is partnering with other companies to provide complementary services. For example, Our startup could partner with an electrical or mechanical startup to provide a complete package of services for clients. This partnership can allow both companies to expand their service offerings and provide a more comprehensive solution to clients. Revenue can be generated through shared fees or commissions on projects.

In conclusion, Our startup generate revenue through project-based revenue, recurring revenue, value-added services, and partnerships with complementary companies. Our Startups would consider their core competencies and the needs of their target market when selecting a revenue model to ensure they can provide high-quality services while maintaining a sustainable business model.



Thank You

**CONTLEE INDIA PRIVATE
LIMITED**

Email ID: rajnights@gmail.com Mo. +91-8587045100